

# Eltek TU 1017 User Instructions

## Using a GSM modem (Wavecom Extend) as a PC modem with Darca Software

### Introduction

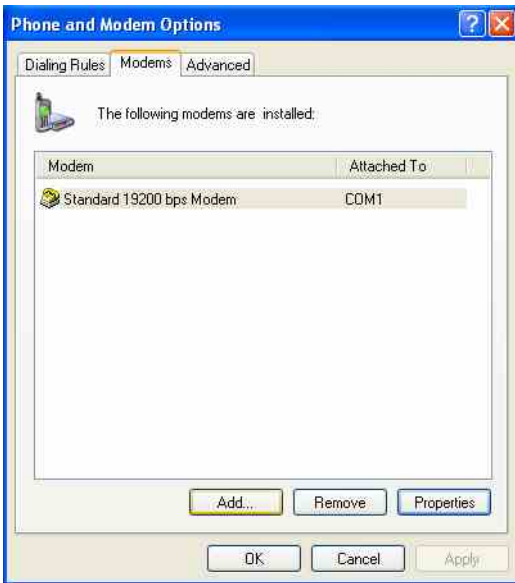
The Eltek GSM modem for use with the PC is marked **GSMPC** and is supplied with lead, antenna and AC power supply (type MPGSMextend). A SIM is not included.

The installation process to follow is:

1. Configure Modem
2. Configure Darca
3. Test the installed modem with Darca

### Step 1: Configure Modem

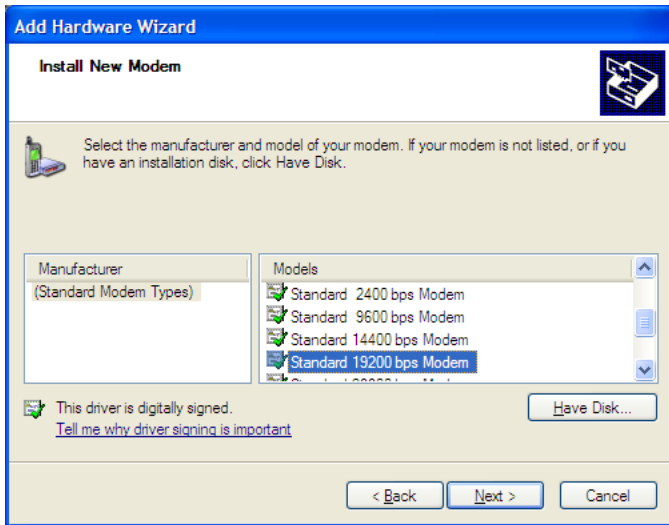
- Connect the Modem to a spare serial port on the pc, using the supplied data cable. (If the PC is USB only use the RS232/USB adaptor supplied by Eltek. Other types are not supported by Eltek). The modem to PC cable can also be ordered as an accessory – type LC-PC/MDM.
- The Wavecom Extend modem must be installed under Windows so that it is available for the Dial-Up Networking feature to use:
  - Windows XP: double click the **Phone & Modem Options** icon within the **Control Panel (Start > Control Panel > Phone & Modem Options)**.
  - Windows 7: Open **Phone and Modem** by clicking the **Start** button, and then clicking **Control Panel**. In the search box, type **phone and modem**, and then click **Phone and Modem**.



- Click **Modems** tab
- Clicking **Add** opens the **Install New Modem** wizard; Windows then prompts the user to decide whether it should search for the modem. Tick **Don't detect my modem; I will select it from a list**, so that the driver can be manually chosen.
- Click **Next**.

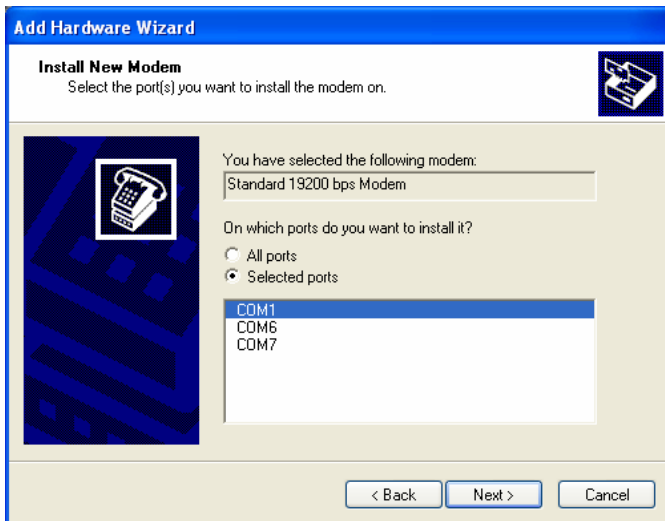


The **Standard 19200 bps Modem** driver is located within the **Models** list of the **(Standard Modem Types)** manufacturer, and should be selected.



Click **Next**.

In the subsequent pane the appropriate COM port should be selected:

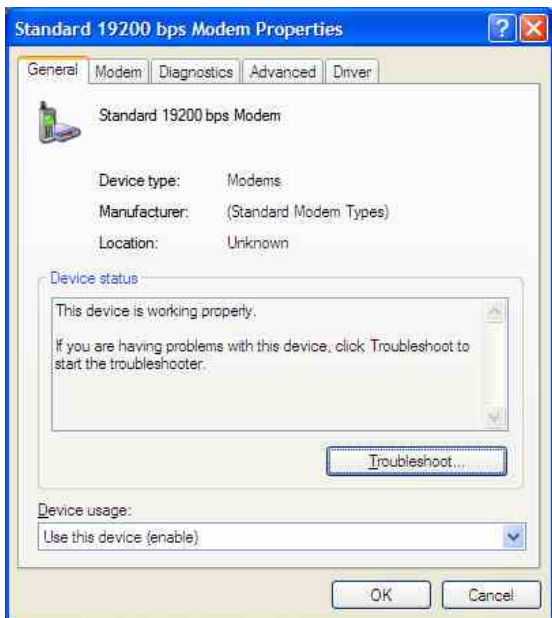
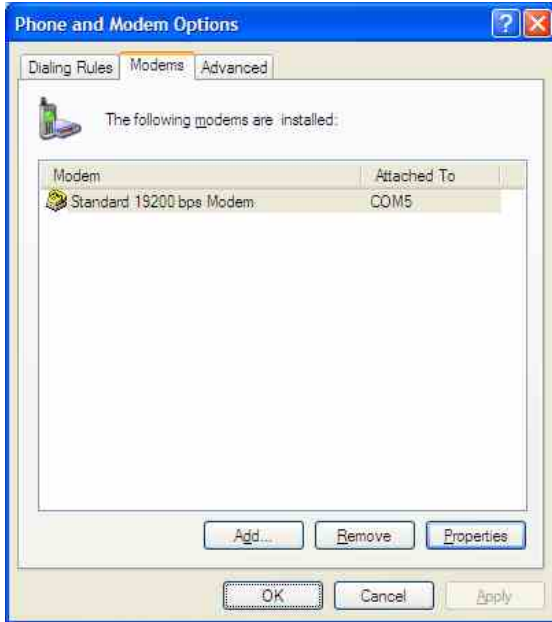


Click **Next**.

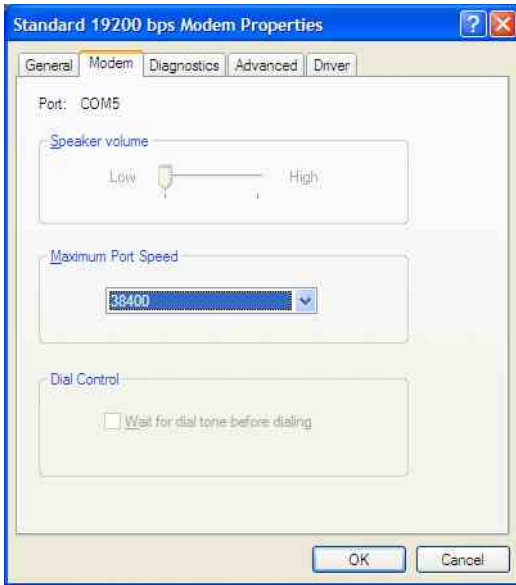
Click **Finish**.

Click **OK** in **Phone and Modem Options** pane.

We now need to edit the modems properties to operate at the correct speed. In the newly created modem, click **Modems > Properties**.



- Select the **Modem** Tab and change the **Maximum Port Speed** to **38400**.
- Click **OK** > **OK**.

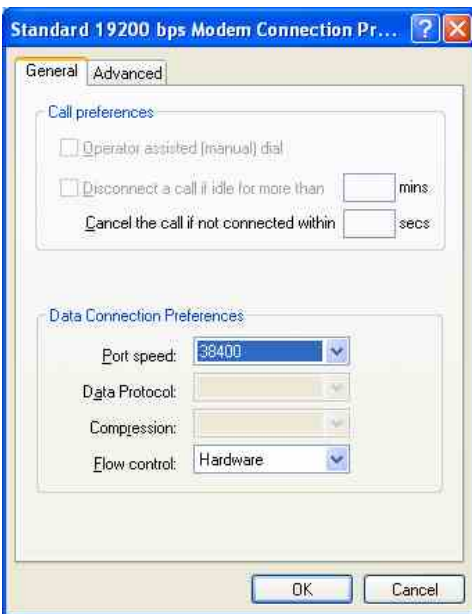


This completes the installation and the modem is ready to use. (You can confirm the operation of modem by reviewing the Diagnostics – see above). The next step is to configure Darca.

## Step 2: Configure Darca

Before connecting the Wavecom Supreme modem to the PC:

- Open your version of Darca.
- Click **Contact wizard > Manual > Next** and check the section **How is the Squirrel connected to the Computer?**. The **Directly** and **via Modem** buttons should both be available.
- If **via Modem** is still greyed out, the modem hasn't installed properly. Attempt the installation process again or seek help.
- Now, click on **Settings > Communications**. Ensure that the **Modem** drop down list is set to **Standard 19200bps modem**. If you have installed multiple GSM modems, they will appear as **Standard 19200bps modem #N**, where **N** is a number. Choose the most recent.
- Click on **Settings** and set the **Port speed** and **Flow control** as follows:



- Click OK.
- Connect the modem using the serial lead or USB adaptors. Ensure power is supplied to the modem!

### Step 3 : Test the installed modem with Darca

Prepare the modem:

- Install a valid (with credit if PAYG) SIM in the modem
- Slide black cover partially across SIM
- Connect antenna
- Connect serial cable(s)
- Apply power
- The red LED will initially be steady and will change to a slow flash (allow up to 30 seconds) when a network is detected.

Test with Darca:

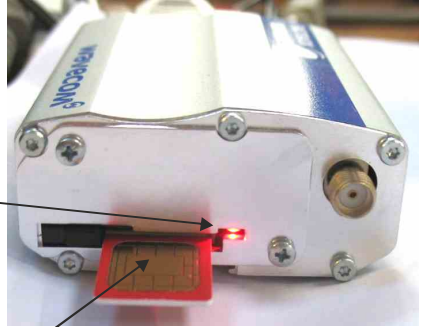
- Open your version of Darca
- Click on **Contact > Modem**, and enter the **Phone number** of the remote modem / Squirrel. Click **Next**.
- The red LED will flash fast whilst contacting the dialled number.
- The **Remote Squirrel Contact Window** will appear quite soon, but the Icons will be crossed out (with a red cross). It may take three or four minutes for the crosses to disappear. This is quite normal at the very first attempt to contact. Thereafter communications will be faster.
- Reboot the computer and the Modem should now be ready for use.

## How do I know if the GSMPC is connected to the network?

A red LED is located adjacent to the SIM tray on the modem. Ensure a valid SIM is installed correctly (see below) and an antenna connected.

### LED cadence:

Continuously ON:	No network connection or no SIM installed!
Flash every two secs:	Connected to network
Fast flash:	Data call in progress



### SIM Installation

- Correct orientation is gold contacts must face up
- To insert the SIM, gently push home the SIM (it will latch) and move slider across to secure SIM in place and activate the modem. To remove the SIM, move slider and press the SIM to unlatch. (Disconnect power to remove or install SIM.)

Use only the supplied GSM antenna. The antenna lead can be extended – refer to Eltek for 5m extension lead.

Note: The system has no means of indicating credit on a SIM.

### Engineering use only

#### Factory Note

Modem needs to be set up with the following commands before shipping:

For Rest of World:

**AT+CBST=71,0,1**

**AT+IPR=38400;&W**

## Eltek

Specialist Data Loggers  
Eltek Ltd, 35 Barton Road, Haslingfield  
Cambridge, CB23 1LL, England  
Tel: +44 (0) 1223 872111  
Fax: +44 (0) 1223 872521  
email: [sales@eltekdataloggers.co.uk](mailto:sales@eltekdataloggers.co.uk)  
<http://www.eltekdataloggers.co.uk>