

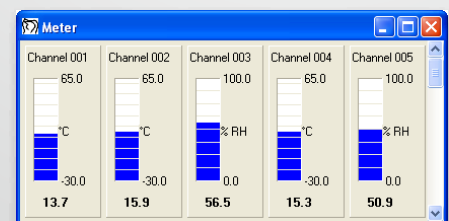
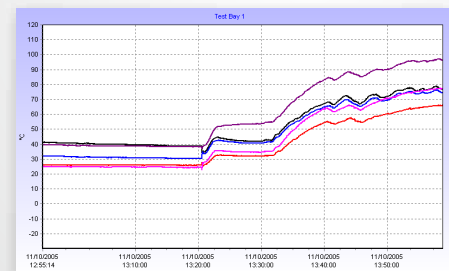
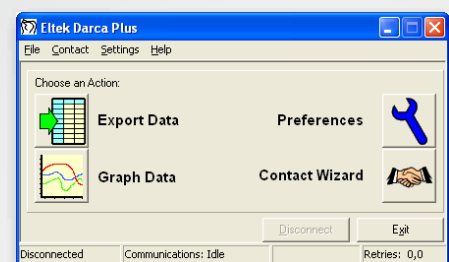
## Downloading And Remote Control Application for Eltek 1000 Series Squirrel Dataloggers

Darca provides powerful but simple-to-use tools for configuring and metering Squirrel channels, changing Squirrel settings, downloading data and analysing it either graphically or statistically. Connection to the Squirrel can be made by a direct serial link, through a modem (standard or GSM), a LAN or via USB.

Three versions are available: Darca Lite with standard features, Darca Plus with enhanced features including modem support and graphing and Darca Secure for full data protection.

### Key Features

- All operational control of the Squirrel may be performed using the PC
- Data can be exported into text format for analysis in a spreadsheet package
- Intelligent storage of Squirrel configuration provides fast connection to the Squirrel
- Squirrel channels may be scaled into appropriate engineering units
- Copy and Paste tools in Channel Setup for simple and fast channel configuration
- Alarm feature warns if any channel inputs are outside 'safe' limits
- Squirrel configuration may be saved as a Setup File and then applied to other Squirrels
- Contact Squirrels on a Squirrel Network
- User-friendly interface for highly intuitive operation
- Multiple windows may be displayed simultaneously to provide total control over Channel Setup and Metering
- Displays all selected channels on screen simultaneously
- Contact Wizard guides you through the stages of contacting the Squirrel
- 'Shed' utility allows scheduled, automated downloading of data from the Squirrel
- Comprehensive help for first time or experienced users
- Transmitter setup for the Gen II Telemetry System



### Darca Lite

- Windows XP / Windows 7 compatible
- Baud rate selectable between 9600 and 115200 baud
- Password protection for tamper-proof operation
- Configurable refresh times of Meter Window and Squirrel status
- Memory Size Calculator optimises download time
- Connection to Squirrel via Serial Port or USB
- Printer output

### Darca Plus

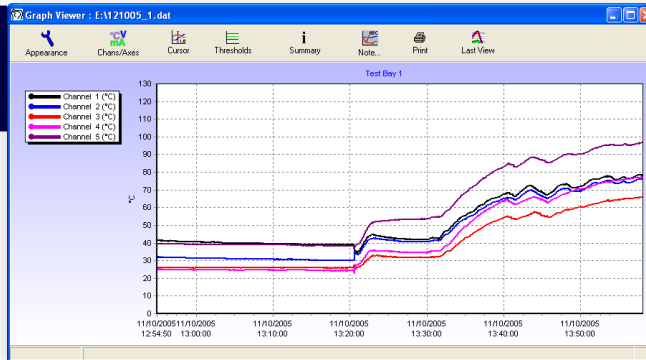
- as Darca Lite
- Connection to Squirrel via GSM or ethernet
- Powerful graphing tools display real-time or historical data
  - 3D plots, line, event and windrose
  - Plot colour and axis configuration can be saved
  - Text comments can be added to points of interest
- Summary window displays data and statistical information
- Configure Gen II transmitters and map transmitters to Squirrel channels



## Downloading And Remote Control Application for Etek 1000 Series Squirrel Dataloggers

### Darca Plus Graphing Tools and analysis

Channel	Channel 1	Channel 2	Channel 3	Channel 4
Start Of Data	11/10/2005 12:54:50			
End Of Data	11/10/2005 13:58:08			
Valid Data	3798	3799	3799	3799
Max Value	78.8	76.4	66.4	77.6
Time Of 1st Max	11/10/2005 13:57:38	11/10/2005 13:57:37	11/10/2005 13:58:07	11/10/2005 13:58:05
Min Value	34.2	30.2	25.2	22.6
Time Of 1st Min	11/10/2005 13:20:37	11/10/2005 13:14:44	11/10/2005 13:20:44	11/10/2005 13:20:34
Average	51.952	47.119	38.870	42.577
Sum	197313.000	179006.400	147669.000	161749.800
Std. Deviation	14.724	17.003	14.727	19.459

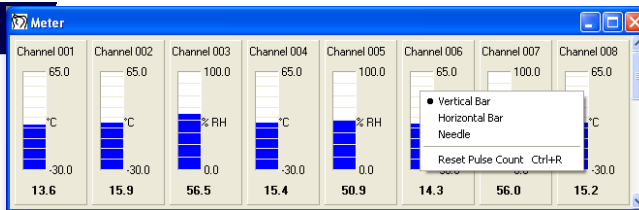


- Summary Window displays stats of current view

- Configure Graph Window: legend, gridlines and 3D orientation
- Cursor control to view raw data of a point on the graph
- Plot channel thresholds
- Powerful zooming tool
- Real Time graphing

### Real Time Metering

- View metered channels as Vertical Bar, Horizontal Bar or Needle
- Intelligent resizing
- Channels in alarm are displayed in red
- Grouping of channels



### Squirrel Settings / Status

- Access Squirrel Settings and view the Squirrel Status
- Delay Generator and Memory Size Calculator tools assist in setting the Start and Stop time
- Squirrel Status refreshed regularly
- Colour coding draws attention to important parameters

### Transmitter Setup

- Map transmitters to Squirrel channels
- Configure transmitter settings
- Meter transmitter inputs
- Calibrate humidity sensors



Specialist Data Loggers  
 Etek Ltd, 35 Barton Road, Haslingfield  
 Cambridge, CB3 7LL, England  
 Tel: +44 (0) 1223 872111  
 Fax: +44 (0) 1223 872521  
 email: sales@eltekdataloggers.co.uk  
 http://www.eltekdataloggers.co.uk

